

County of Sutter

Emergency Operations Plan



Sutter Operational Area

Annex 8

Transportation Emergency and HazMat Event Plan

BLANK PAGE

6/29/2011
Table of Contents

Section 1 - Introduction	Page 1
General	Page 1
Emergency Plan Management and Updates	Page 1
Authority Citations	Page 1
Section 2 – Plan Overview	Page 3
Concept of Operations	Page 3
Emergency Organizational Structure	Page 3
Emergency Organization Chart	Page 4
Section 3 – Hazard Analysis For Transportation Emergency	Page 5
General	Page 5
Major Roadway Accidents	Page 5
Train Derailments	Page 5
Aircraft Accidents	Page 5
Section 4 – Hazard Analysis For HazMat Events	Page 7
General	Page 7
Section 5 – Plan Responsibilities	Page 9
Emergency Operations Center	Page 9
Management	Page 9
Operational Structure	Page 9
Coordination of Disciplines	Page 9
Inclusion of Non-Profit Agencies/Organizations	Page 9
Public Information	Page 9
Safety and Security	Page 9
Information Sharing and Dissemination	Page 10
Sheriff's Office	Page 10
Fire Services	Page 10
Emergency Services	Page 11
Operations	Page 11
Public Works	Page 11
Planning and Intelligence	Page 11
Logistics Support Requirements	Page 11
Finance	Page 12
Continuity of Operations	Page 12
Training and Exercises	Page 12
Attachments	Page 13
Attachment A – Emergency Support Functions	Page 13

6/29/2011

BLANK PAGE

6/29/2011

Section 1 - INTRODUCTION

General

This annex is general in nature and written to augment existing checklists and SOPs currently in place. Transportation Emergency and HazMat Events are addressed together due to their nature of occurrence and the relationship of the hazards. Please refer to the **Sutter County OA EOP, Basic Plan Chapter B, Section 2 Threat Matrix**.

There is a real threat of a transportation emergency or HazMat event occurring in Sutter County. The county has four heavily traveled traffic corridors, highways 20, 70, 99, and 113. The major trucking routes are State Highways 99, 20, and 113. Highway 99 is the main north to south route in the county. Highway 20 runs from east to west and connects Colusa, Sutter, and Nevada Counties.

Union Pacific (UP), Burlington North Santa Fe (BNSF), and Amtrak provide rail transport services through Sutter County. Aircraft landing at the Sacramento International Airport overfly the southern portion of Sutter County. Additionally, military aircraft from Beale AFB have flight patterns that take them over most of the county. All of these are potential situations for a major transportation emergency.

Being an agricultural county, there is a strong potential for a hazardous material emergency due to spills from pesticides, fuel, or other chemicals used in farming/agriculture.

Emergency Plan Management and Updates

The Office of Emergency Management will be responsible for updates and maintenance of this plan.

Authority Citations

The authority for Emergency Operations and Disaster Preparedness used in development of this annex of the Sutter County Operational Area EOP is found in the **Sutter County OA EOP, Basic Plan Chapter A, Section 6**.

This plan augments the Sutter County Operational Area Emergency Operations Plan, dated **October 2011**.

6/29/2011

BLANK PAGE

Section 2 – PLAN OVERVIEW

Concept of Operations

This plan or the applicable portions of this plan will be implemented as directed by the County Administrative Officer, Sheriff, County Fire Chief, or Incident Commander as appropriate.

Guidance for implementation is in the **EOP Basic Plan Chapter D, Response Phase - Initial Response**, in **ANNEX 1 - Emergency Support Functions Handbook and Checklists, Section 3, General Response Checklists**, and in **ANNEX 2 – Emergency Operations Center Handbook and Position Checklists**.

Additional supplemental information is provided in the attachments of this annex.

During a disaster or emergency, this plan will be implemented in accordance with the Standardized Emergency Management System (SEMS).

Personnel assigned to the organizational levels of SEMS will follow checklists/SOPs established by the EOP or the appropriate annex to the EOP. The Emergency Operations Director or Incident Commander will determine communication equipment usage and any equipment issued to an emergency worker will be documented and tracked to ensure proper accountability of the asset. Coordination of public or media information releases will be through the PIO. The Management function of SEMS will determine what information is to be released and when the appropriate timeframe for such a release will occur.

For more information on SEMS/ICS refer to the **Sutter County OA EOP Basic Plan, Chapter A, Section 3**. The SEMS functions for response are indicated in this annex *Attachment A, Emergency Support Functions – Transportation Emergency and HazMat Event*.

The federal Department of Homeland Security has established that the National Incident Management System (NIMS) will be used during an emergency/disaster. The State of California, through Executive Order S-2-05, has established that the implementation of SEMS/ICS substantially meets the requirements of NIMS.

For more information on NIMS refer to the **Sutter County OA EOP Chapter A**.

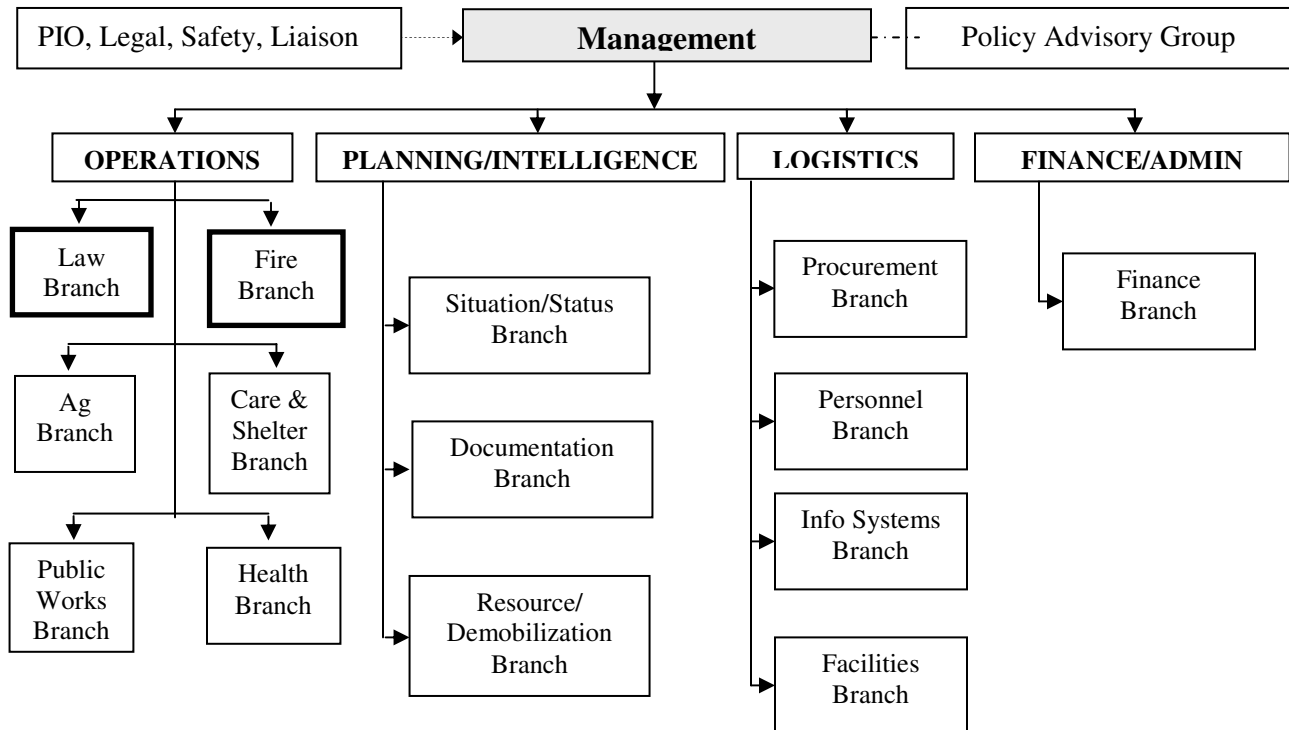
Emergency Organizational Structure

During a transportation emergency or HazMat event, the Incident Commander will establish the initial command and control functions based on the Incident Command System. Most events/emergencies will be operationally controlled on-scene and coordination of Operational Area resources will be made through a Level 1 or 2 activation of the Emergency Operations Center when deemed necessary by the Incident Commander or Emergency Operations Director.

During a Level 3 activation of the Emergency Operations Center, the Emergency Organization operates under SEMS, with the Emergency Operations Director providing leadership to the

Management Function. The Management Function provides Command and Control to the Emergency Operations Team and consists of the Sheriff, the County Fire Chief, Public Works Director and the Emergency Operations Manager. This membership may change based on the nature of the emergency. The chart below is representative of a Level 3 Activation of the Emergency Operation Center (EOC) for a large-scale event.

Emergency Organization Chart



Operations –

Law Branch:

Field Ops, Detention, and Dispatch

Fire Branch:

Fire, HazMat Response, and Rescue

Ag Branch:

Biologists and Animal Control

Care & Shelter Branch:

Care & Shelter, Red Cross, and Medical Transport

Health Branch:

Environmental Health, Mental Health, and Public Health

Public Works Branch:

Reconnaissance, Engineering Support, and Heavy Equipment Support

Finance & Administration –

Finance Branch:

Invoice Processing and Payroll Tracking

Planning & Intelligence –

Situation/Status Branch:

Planning & Forecasting, Field Observation, and Info Collection/Display

Documentation Branch:

Written and Visual/Graphic

Resource and Demobilization Branch:

Personnel, Equipment, and Material

Logistics –

Procurement Branch:

Supplies, Equipment, and Communications

Personnel Branch:

County Employees and Volunteers

Facilities Branch:

EOC, Off-Site Work Areas, and R&R Areas

Information Systems Branch:

Technicians

Section 3 – HAZARD ANALYSIS FOR TRANSPORTATION EMERGENCY

General

Most transportation emergencies are roadway accidents. While not insignificant, the majority of these accidents are minor in scope of response and recovery operations. Major roadway, train, and aircraft accidents are the emergencies that will be addressed in this annex. Many of these emergency situations may cause ancillary emergencies such as hazardous materials spills, which may require extensive population movement and/or sheltering efforts. The following is a brief synopsis of the types of transportation emergencies that could be experienced in the Sutter County Operational Area. The information provided is for informational purposes only and responders will rely on their appropriate checklist/SOPs for such events.

Major Roadway Accidents

Almost daily in the Sutter County Operational Area, there is a vehicle accident. While most of these involve passenger vehicles, there is a real potential for an accident to occur involving a heavy transport vehicle. A major truck/auto accident on any of the major routes would severely limit access into and out of the County. Road closures would cause traffic to overflow onto local surface roads creating significant traffic problems for local law enforcement agencies. Alternate routes are not available on some portions of the major highways. Heavy transport vehicles found throughout the OA carry fruit, vegetables, dairy products, pesticides, and petroleum. This list is not inclusive and shows that any accident has the potential of a major catastrophe.

Train Derailments

The railroad system of Sutter County primarily consists of a main line running through the county. A train accident in or near the area can result in considerable injury or loss of life and property damage. An accident in rural areas of the County will pose more of a threat to livestock and the environment. Hazardous materials spills, fires, and significant property damage are the potential hazards associated with a train accident and may require movement and shelter operations in the affected area(s).

Aircraft Accidents

The County of Sutter operates an airport in Yuba City offering crop dusting, refueling, and repair services. Crashes of small planes in the past have not posed extensive problems to the county. However, we are in the direct flight approach path for Sacramento International Airport. A crash of a large jet would cause major damage to Yuba City if the crash occurred within the city limits. If it occurred in the rural area of the county, it could cause extensive damage to crops during the growing season. Military aircraft over fly much of this region on training missions and potentially could pose a problem for Sutter County.

6/29/2011

BLANK PAGE

6/29/2011

Section 4 – HAZARD ANALYSIS FOR HAZARDOUS MATERIALS

General

Most Hazardous Material (HazMat) events are manageable spills resulting from roadway, rail, or industrial accidents. Industrial and farming entities maintain plans for cleanup and response to on-site emergencies. Throughout Sutter County, there are pesticides, fuels, and other HazMat in use daily. Any fire, accident, or spill could result in a HazMat event.

In the Operational Area, Fire is responsible for emergency response. Sutter County Fire and Yuba City Fire have Standard Operating Procedures (SOP) to respond to a HazMat event in their jurisdictions.

Sutter County Environmental Health provides guidance and information on the requirements for storage and use of hazardous materials for businesses and farms.

Depending on the size the event and the magnitude of cleanup, state agencies could be used. However, primary cleanup responsibilities lie with the responsible party.

6/29/2011

BLANK PAGE

Section 5 – GENERAL PLAN RESPONSIBILITIES

Emergency Operations Center

Emergency Operations Center activation and staffing levels are found in ANNEX 2 – Emergency Operations Center Handbook and Position Checklists.

The following is a general guide of the responsibilities for the Emergency Organization:

Management

Management assignments are reflected in *Attachment A, Emergency Support Functions – Transportation Emergency and HazMat Event*.

Operational Structure

The County of Sutter will activate the appropriate SEMS functions based upon the level of the transportation/Hazmat event/emergency.

Coordination of Disciplines

Sutter County will use multi-agency, multi-discipline coordination in its response to an extreme weather or seismic event/emergency.

Inclusion of Non-Profit Agencies/Organizations

Non-profit organizations, such as the American Red Cross will be involved in extreme weather or seismic event response planning. Sutter County will contact the appropriate non-profit organizations in the event of a potential threat or actual event.

Public Information

The Public Information Officer (PIO) will be activated as soon as practical during an emergency. The PIO will coordinate with media for news releases.

News release procedures will be agreed upon, and established for the Sutter County EOC, the Unified Command, and other interested parties.

Safety and Security

During a potential threat or actual event, employee safety and operational security will be key concerns for Sutter County.

During actual emergency operations, heightened safety and security procedures will be in force and will be followed by county personnel. Security and safety procedures will also be

6/29/2011

implemented for all command posts and other operational sites. The Sheriff's Department will serve as lead for security functions.

Information Sharing and Dissemination

During an actual emergency or disaster the release of information raises significant issues regarding information sharing and dissemination. Security and confidentiality concerns must be weighed against operational needs and public interest.

The notification of an event and any subsequent updates will be made verbally through the most secure form of landline available. Written confirmations of notification and updates will be used. Emergency response personnel will observe communication security procedures. Sensitive information will not be communicated by cell phone or radio.

Sutter County will have scheduled briefings for EOC staff and other emergency response personnel and will coordinate briefing times, reporting approaches, and news releases as much as possible with other SEMS levels.

Sheriff's Office

The Sheriff, or designee, will determine and establish SOPs required for the operation and deployment of law enforcement assets controlled by his Department and as authorized by Local, State, and Federal Statutes/Regulations.

Within the EOC, the Sheriff's Office (SO) will assume the security function.

The Sheriff Office will be the lead for perimeter security, access control, traffic/crowd control, evacuations, and notifications. The Sheriff Office will also coordinate coroner issues and assist with damage assessment and fatalities management. *Existing procedures may be modified as necessary depending on the situation.*

The Sheriff Office will request law enforcement mutual aid if needed to accomplish these functions.

Fire Services

The Fire Chief, or designee, will determine and establish SOPs required for the operation and deployment of OA Fire assets controlled by the Division and as authorized by Local, State, and Federal Statutes/Regulations.

Fire Services will be the lead for fire response, hazardous materials events, and medical/rescue operations. Fire Services will provide support, if possible, to the Sheriff's Office for evacuation activities. *Existing procedures may be modified as necessary depending on the situation.*

Additionally, the Fire Chief will request fire and rescue mutual aid if needed.

Emergency Management

The Emergency Operations Manager or designee will assist the Incident Commander during Level 1/2 Activation of the EOC, or before EOC activation has occurred, to provide information required or other necessary reporting systems as needed. During a Level 3 Activation (Full-Scale), assistance to the Incident Commander will be coordinated through the appropriate EOC function. Additionally, the Office of Emergency Management will provide general awareness information to the public on transportation emergency or Hazmat event preparedness/prevention. This may be accomplished through the county website, Public Services Announcements, or other media.

Operations

The Incident Commander (IC) may be the Sheriff or the Fire Chief depending on the nature of the situation and availability of staff. If this is the case, the Sheriff or Fire Chief will designate a representative to the Management Function of the EOC, until the Sheriff or Fire Chief can be operationally released from the on-scene Command and Control function.

Public Works will serve as lead for damage assessment and will be the representative for utilities concerns. Potential public works activities include:

- reconnaissance of public infrastructure (roads, bridges, facilities, and utilities)
- alternate route identification
- building access
- utility access re-routing
- temporary repairs

Public Works will assist with access and crowd control and fatalities management. The Director of Public Works will request public works mutual aid if needed. They will coordinate with the Sheriff Office on security issues if needed.

Planning/Intelligence *Attachment A, Emergency Support Functions – Transportation Emergency and HazMat Even.*

Includes situation, documentation, demobilization, and resources units.

Logistics Support *Attachment A, Emergency Support Functions – Transportation Emergency and HazMat Event*

The Logistics Branch will be responsible for identifying and procuring supplies, services, equipment, and facilities that will be required for Emergency Operation activities.

During emergency operations, particular emphasis will be placed on maintaining OA capabilities of computer systems, telecommunications, including land line and radio.

6/29/2011

Finance *Attachment A, Emergency Support Functions – Transportation Emergency and HazMat Event.*

It will be necessary to track costs associated with an event or potential event. Within Finance/Administration Branch there may be a separate Cost Unit to track the costs of the event.

Continuity of Operations

It will be necessary to ensure continuity of day-to-day operations during a potential threat or actual event. This includes payroll processing, contracts management, personnel actions, and file security. The agencies responsible for these processes will develop procedures to ensure continued operations and services.

Training and Exercises

Training will be coordinated as necessary to ensure safe, secure, and effective operations of equipment and procedures. The Office of Emergency Management will notify departments, jurisdictions, and agencies of training opportunities, as they are available. Any Operational Area grant funds identified to be expended for exercise/training will be coordinated with the Office of Emergency Management to ensure proper allocation/tracking of the funds before expenditure occurs.

Exercises are important for the successful response of personnel during an emergency or disaster. If an exercise interferes or otherwise hampers normal operations the exercise will be terminated and not resumed until the problem is corrected.

6/29/2011

**Attachment A
Emergency Support Functions – Transportation Emergency and HazMat Event**

Emergency Support Functions	Management	Operations	Plan/Intel	Logistics	Fin/Admin
ESF-1 Transportation	EO Director, Agency Reps	PW/SO	Resource Tracking And Demobilization	Procurement Branch	
ESF-2 Communication and Information Technology	EO Director, Agency Reps	SO Dispatch	Situation Analysis	Info Tech & Communications Branch	
ESF-3 Public Works and Engineering	OA Public Works Branch Chief	PW/Agency Reps	Situation Analysis		
ESF-4 Firefighting	OA Fire Coordinator	Fire Branch	Situation Analysis	Procurement Branch	
ESF-5 Emergency Management	EO Director/Incident Commander	OPS Chief	P&I Chief	Logistics Chief	Admin Chief
ESF-6 Mass Care, Housing, and Human Services	OA Mass Care and Shelter Branch Chief	OA Human Services	Situation Analysis	Procurement Branch	
ESF-7 Resource Support	OA Logistics Branch Chief		Resource Tracking	Procurement Branch	Finance
ESF-8 Public Health and Medical Services	OA Health Branch Chief	Health Unit Leader	Situation Analysis	Procurement Branch	
ESF-9 Urban Search and Rescue	SCSO	SCSO/Fire	Situation Analysis	Procurement Branch	
ESF-10 Oil and HazMat Response	OA HazMat Coordinator	Fire Branch	Situation Analysis		
ESF-11 Agriculture and Natural Resources	Ag Commissioner	AG Branch	Situation Analysis		
ESF-12 Energy	EO Director, Agency Reps	Public Works Branch Chief	Situation Analysis		
ESF-13 Public Safety and Security	OA Law Coordinator	SCSO	Situation Analysis		
ESF-14 Long Term Community Recovery	EO Director		Documentation and Demobilization	Personnel Branch	Finance
ESF-15 External Affairs	EO Director/PIO		P&I Chief		

6/29/2011

BLANK PAGE