

Sutter County Groundwater Management Plan

Groundwater Management Plan

**Plan Advisory Group - Meeting No. 7
August 19, 2010**



Plan Advisory Group Meeting No. 7

Presented by:

**Dan Peterson, PE, CFM
Deputy Director Water Resources
Sutter County**

and

**Larry Ernst, PG, CEG, CHG
Principal Hydrogeologist
Wood Rodgers, Inc.**



Plan Advisory Group Meeting No. 7 Agenda

1. Opening remarks and introductions
2. New and pending California Legislation that may affect Sutter County and the Groundwater Management Plan (GMP)
3. Water quality data from new and existing multiple-completion monitoring wells
4. Existing and future cooperative efforts regarding data collection and groundwater management
5. Public input on groundwater elevation and water quality data
6. Public input on GMP – Open discussion
7. Future PAG Meeting Schedule

Recent/Pending California Legislation

- ▶ **Senate Bill x7 6 (SB 6)**
 - Signed into law on 11/6/09
 - Statewide Groundwater Elevation Monitoring
- ▶ **Assembly Bill 2304**
 - Pending
 - Amendment to required GMP Components

SB 6

- ▶ Signed into law on November 6, 2009
- ▶ California Statewide Groundwater Elevation Monitoring – CASGEM
- ▶ SB 6 is a “voluntary” program, however non participation may make the County ineligible for groundwater related grants awarded and distributed by the State
- ▶ Establishes a groundwater monitoring program to more regularly and systematically monitor groundwater levels throughout the state, at the “local level”, in all groundwater basins and subbasins identified in DWR Bulletin-118

continued

SB 6

- ▶ Bill requires that a local entity (“Monitoring Entity”) must register with the state for groundwater monitoring by January 1, 2011, and begin monitoring by January 1, 2012
- ▶ DWR works cooperatively with local Monitoring Entities to achieve monitoring programs that demonstrate seasonal and long-term trends in groundwater elevations
- ▶ DWR accepts and reviews prospective Monitoring Entity submittals, then determines the designated Monitoring Entity, notifies the Monitoring Entity and makes that information available to the public

<http://www.water.ca.gov/groundwater/casgem/>

Sutter County's Concerns on SB 6

- ▶ Appears to be the first step in a State attempt to gather data necessary to initiate an adjudication of groundwater in California
 - Step 1 – monitoring
 - Step 2 – reporting
 - Step 3 – adaptive management and regulations

Sutter County's Concerns on SB 6

- ▶ Immediate concerns:
 - Sutter County does not own any monitoring wells
 - Sutter County does not have the right to access monitoring wells on private property
 - Sutter County does not have staff available (or trained) to conduct monitoring
 - Sutter County does not have financial resources to build monitoring wells, hire staff, purchase equipment, or pay for staff time relating to monitoring and reporting activities
 - If the County lacks the financial resources to carry out this unfunded mandate, the State will withhold grant moneys funded by bonds
 - This could put the County in the position of becoming a policing arm of the State Department of Water Resources

AB 2304

- ▶ Amends Sections 10752, 10753.5, and 10753.7 of the Water Code, relating to groundwater
- ▶ Bill would require that prior to the adoption of the GMP, the local agency must provide a copy of the proposed GMP to an interested person (any landowner within the local agency), upon written request
- ▶ The bill would require the local agency to provide each of those interested persons with a specified notice at least 30 days prior to the commencement of the second hearing to determine whether to adopt the plan

- Assembly Bill No. 2304 as amended in Senate June 15, 2010

AB 2304

- ▶ *“...This bill would add to the list of components that are required to be included in a groundwater management plan for the specified funding purposes a map identifying the recharge areas, as defined, for the groundwater basin...”*

- Assembly Bill No. 2304 as amended in Senate June 15, 2010

AB 2304

- ▶ *“Groundwater recharge” means the augmentation of groundwater, by natural or artificial means, with surface water or recycled water.*
- ▶ *“Recharge area” means the area that supplies water to an aquifer in a groundwater basin and includes multiple wellhead protection areas.*
- ▶ *“Wellhead protection area” means surface and subsurface area surrounding a water well or well field that supplies a public water system through which contaminants are reasonably likely to migrate toward the water well or well field.*

- Assembly Bill No. 2304 as amended in Senate June 15, 2010

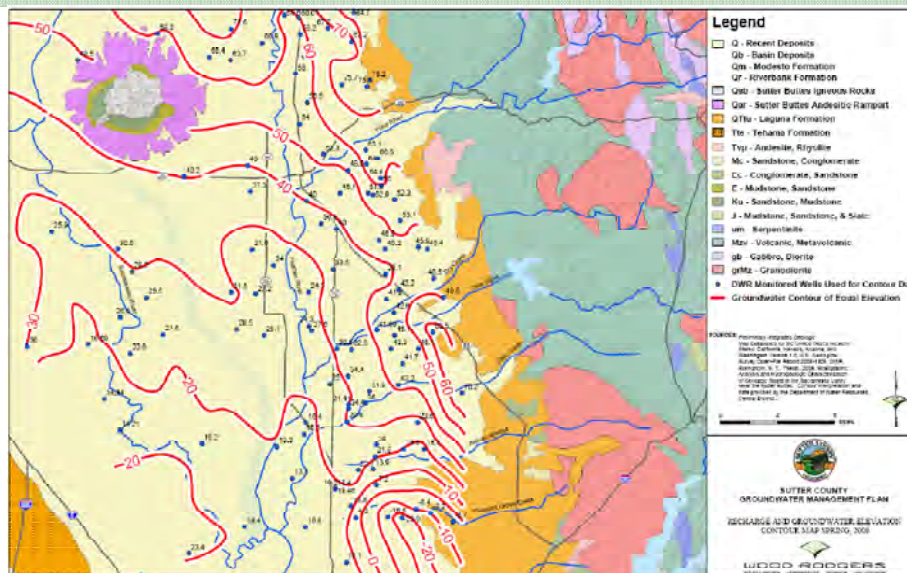
Sutter County's Concern on AB 2304

- ▶ This appears to be yet another attempt by the State to wrest control of land use planning away from Counties
- ▶ The State is already forbidding development in flood zones (as defined by the State, not FEMA). Now the State wants self-reporting on the part of the Counties so that the State can potentially use that information to forbid development in “recharge areas”
- ▶ The County's concern is that rice fields irrigated by surface water could be considered a recharge area

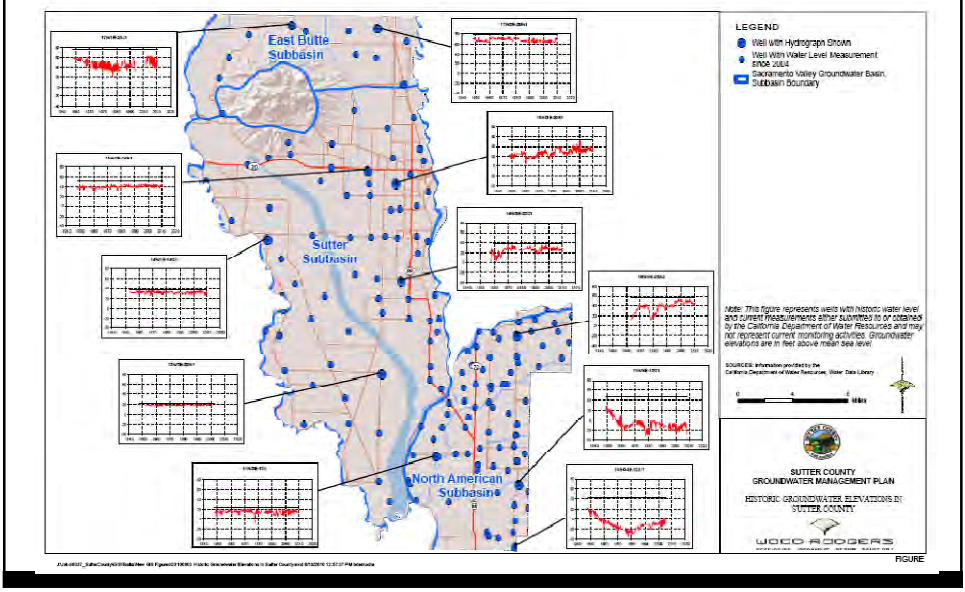
Recharge Areas

- ▶ AB 2304 may require the recharge areas for each subbasin underlying Sutter County will need to be identified as a **required** component of the GMP:
 - East Butte Subbasin
 - Sutter Subbasin
 - American River Subbasin

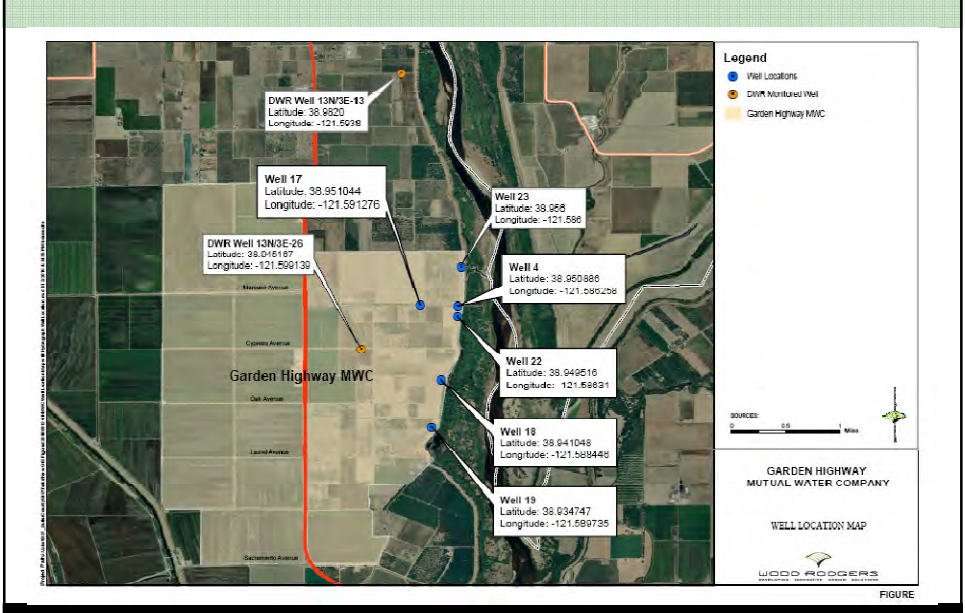
Identifying Recharge Areas



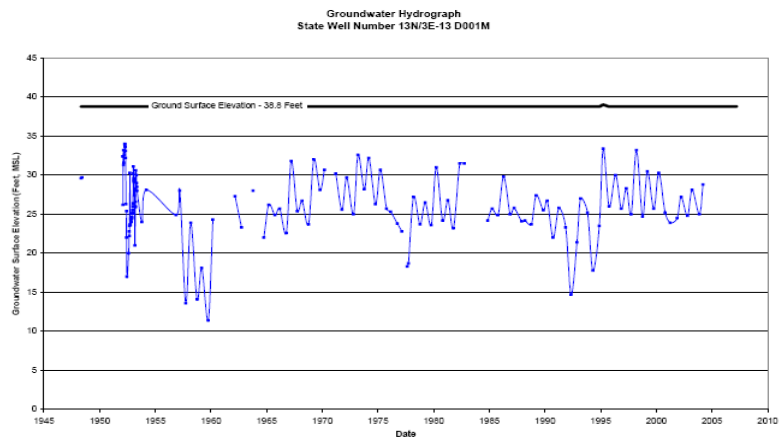
Historic Groundwater Elevations Sutter County



GHMWC Well Location Map



Historic Groundwater Elevation 13N/3E-13



J:\Jobs\8408_GHMWC\13N3E13D001M_Groundwater Hydrograph_20100818.xls

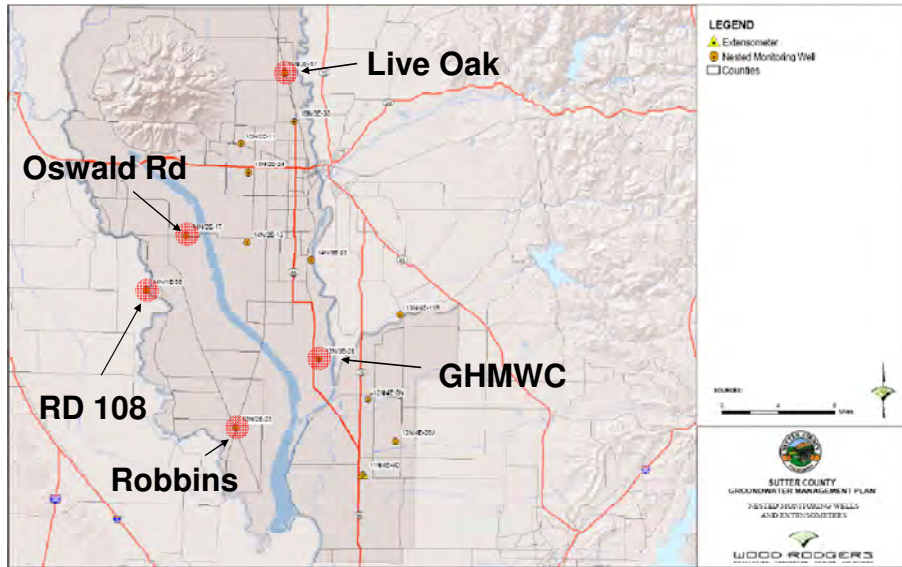
Source: CA Water Data Library

Water Quality Data

▶ New DWR wells include:

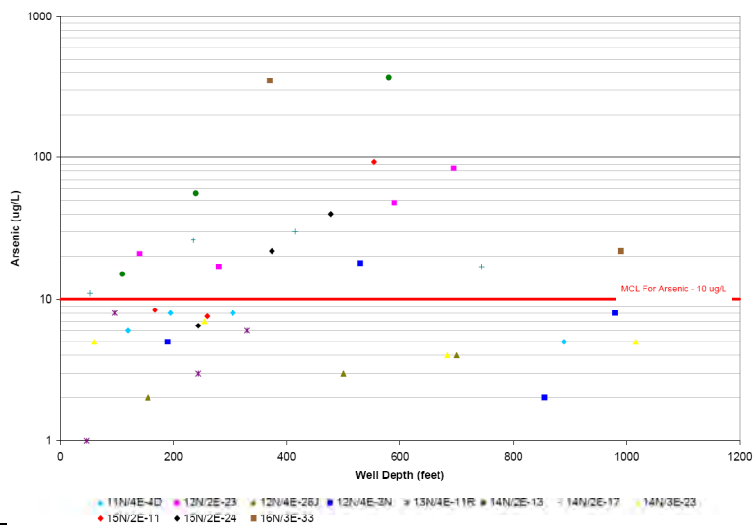
- Robbins
- GHMWC
- Oswald Road
- Live Oak
- RD 108

Recently Constructed Nested Monitoring Wells

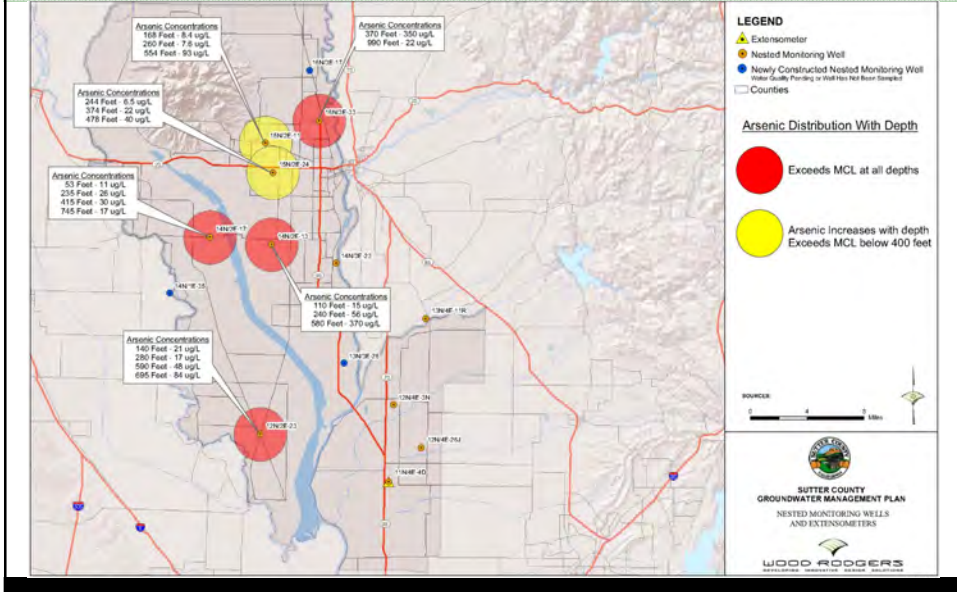


Arsenic

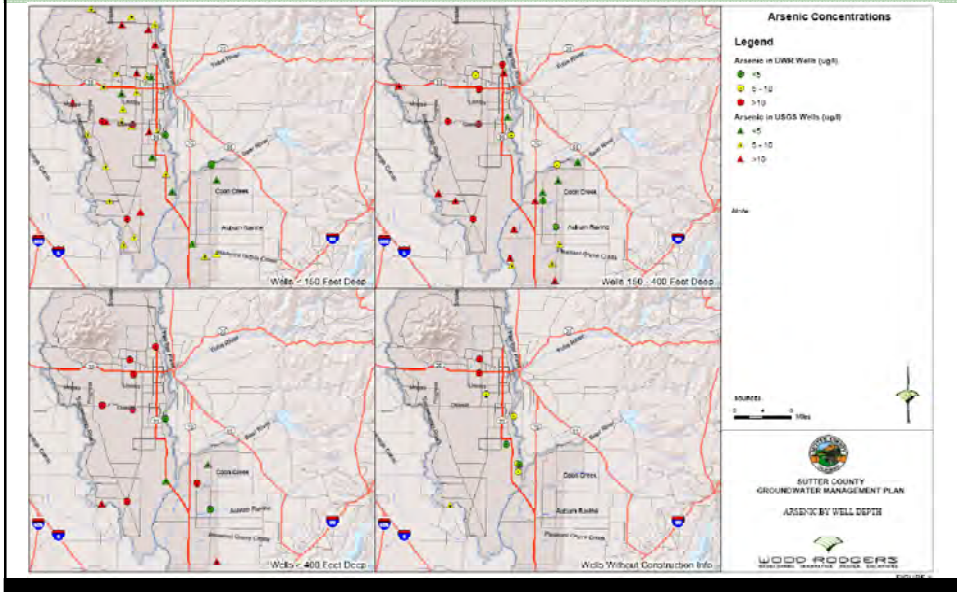
Arsenic in Nested Monitoring Wells
Sutter County



Arsenic

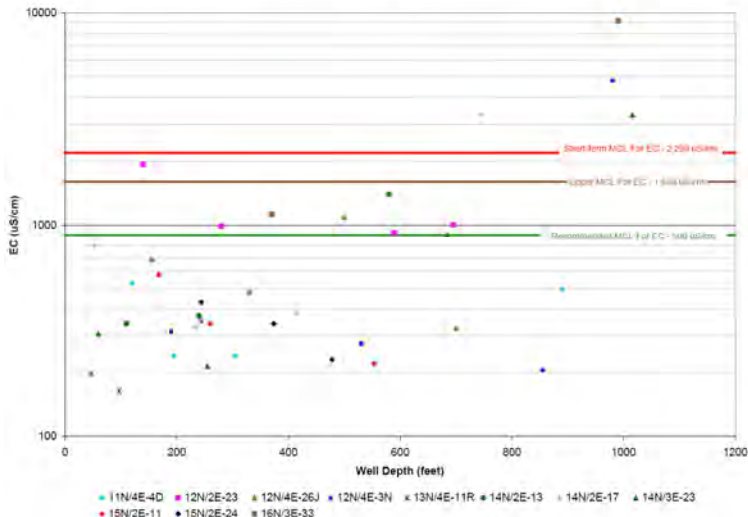


Arsenic

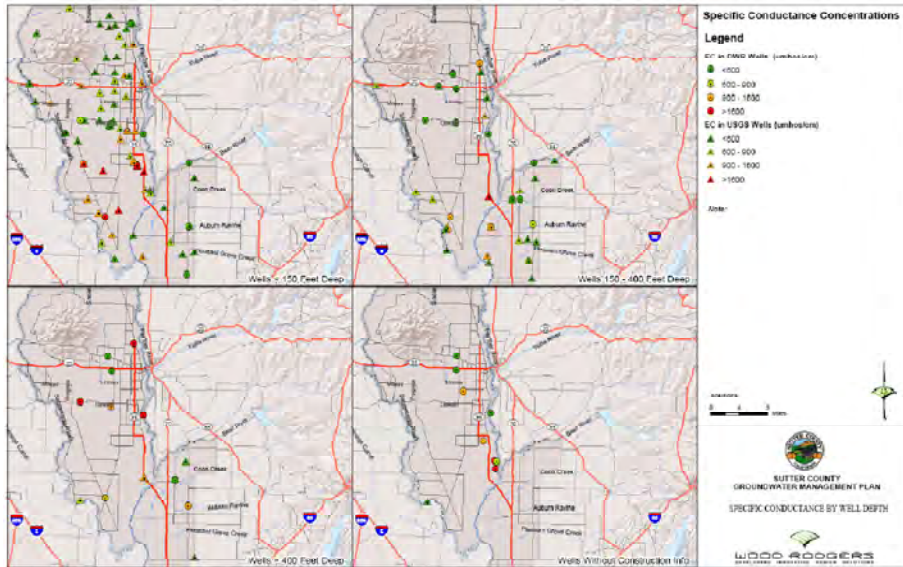


Specific Conductance

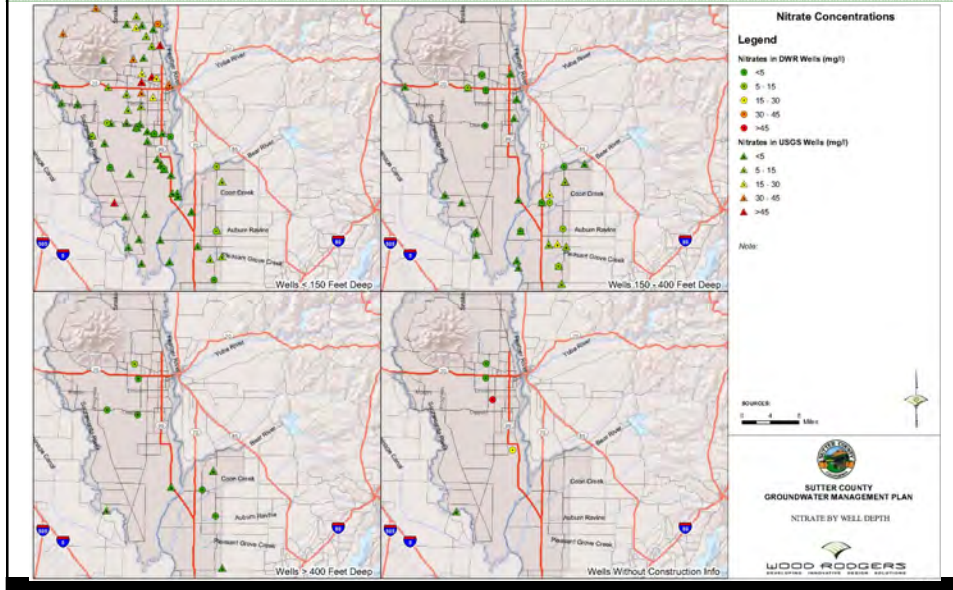
Specific Conductance (EC) in Nested Monitoring Wells
Sutter County



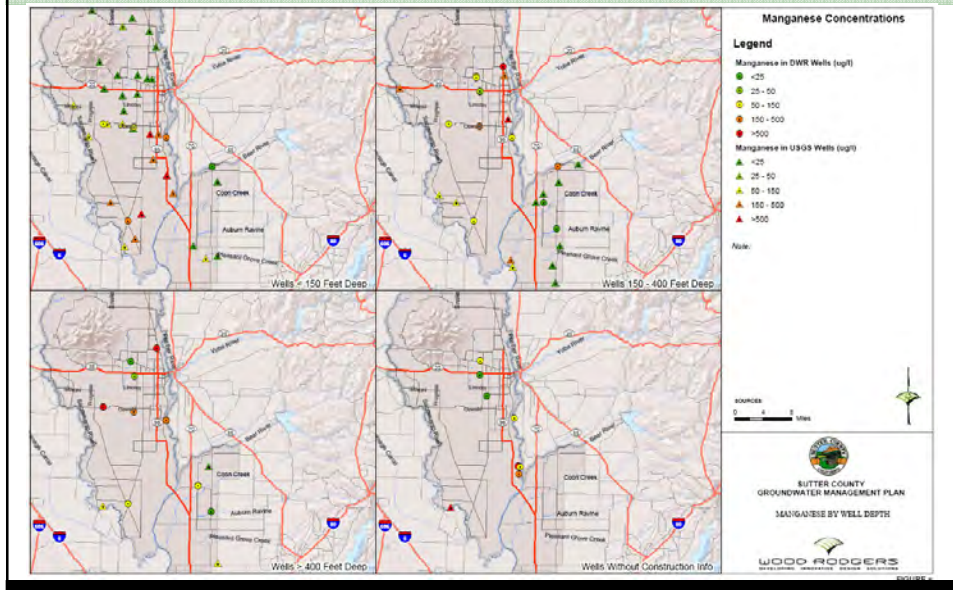
Specific Conductance (EC)



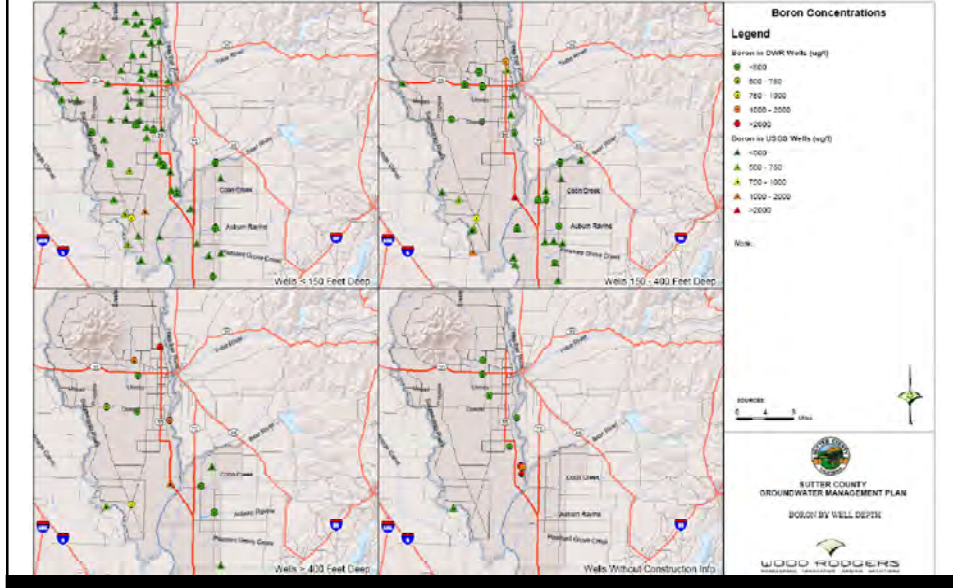
Nitrate



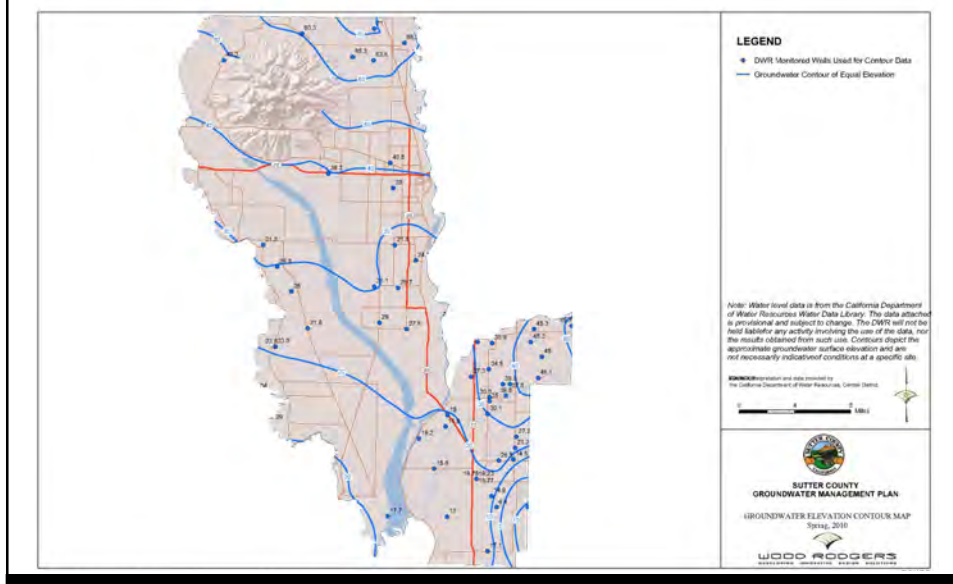
Manganese



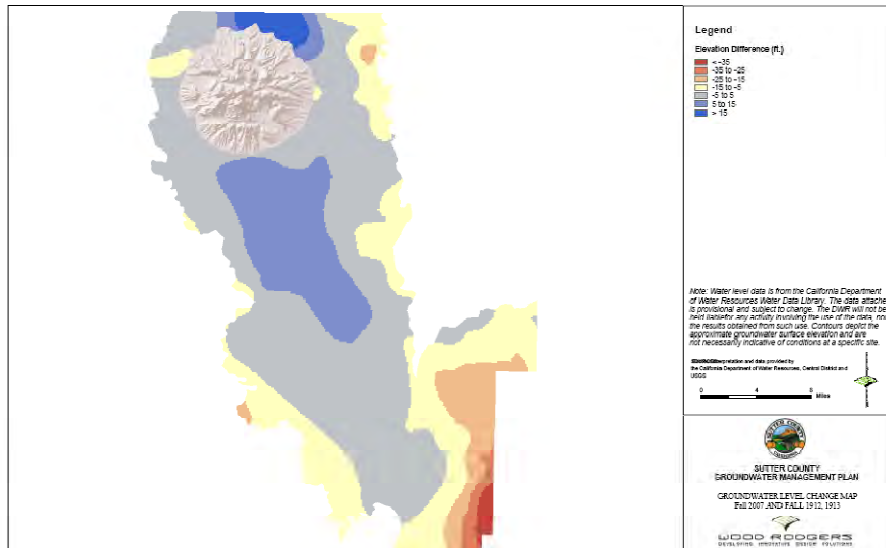
Boron



Groundwater Elevation



Sutter County Groundwater Level Change Map



Existing Groundwater Management

- ▶ Districts/Agencies within Sutter County with adopted GMPs
 - Feather Water District
 - Reclamation District 1500
 - Reclamation District 787
 - Sutter Extension Water District
 - South Sutter Water District

Cooperative Data Collection

- ▶ Local coordination and participation is the foundation for sustainable groundwater management and water supply reliability at the local scale
- ▶ To make effective decisions, the County must rely on current data about the quality and quantity of the underlying groundwater
- ▶ Without current and on-going data, decisions will be based on old data and will not reflect the current conditions in the groundwater basin

Grant Funding

- ▶ **Prop 84: “Safe Drinking Water, Water Quality and Supply, Flood Control, River and Coastal Protection Bond Act of 2006”**
- ▶ **Prop 1E: “Disaster Preparedness and Flood Prevention Bond Act of 2006”**
- ▶ **Prop 50: “Water Quality, Supply and Safe Drinking Water Projects Act of 2002”**

Contact Information



Daniel W. Peterson, PE, CFM
Sutter County
1130 Civic Center Blvd., Suite F
Yuba City, CA 95993
(530) 822-3299



Larry Ernst, PG, CEG, CHG
Wood Rodgers, Inc.
3301 C Street, Building 100-B
Sacramento, CA 95816
(916) 341-7447
